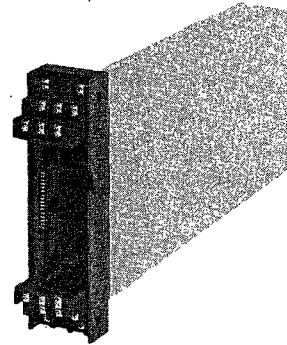


General Specifications

Model SHUR
Case (Rack-Mounting)

YEW SERIES 80

The SHUR Rack-Mounting Case is used by all YewSeries 80 rack-mounting instruments. This case can be ordered separately from (prior to) the plug-in instrument modules themselves, and pre-wired.



STANDARD SPECIFICATIONS

Mounting: Rack mounting.

Wiring:

Signal Wiring to/from the Field: ISO M4 size (4 mm) screws on terminal block.

Material: Aluminium.

External Dimensions: 180 (H) × 48 (W) × 300 ((D): depth behind panel) (mm).

Mounting Holes: 5.8 mm dia.

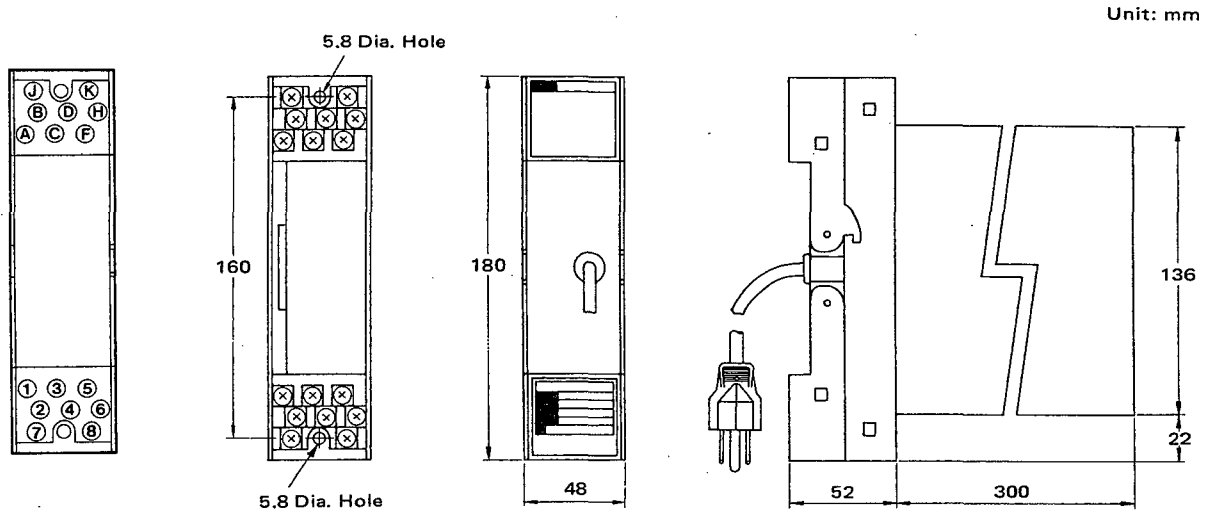
Weight: 1 kg.

MODEL AND SUFFIX CODES

Model	Suffix Codes	Description
SHUR	Housing kit
	-000	Always 000
Style Code	*A	Style A

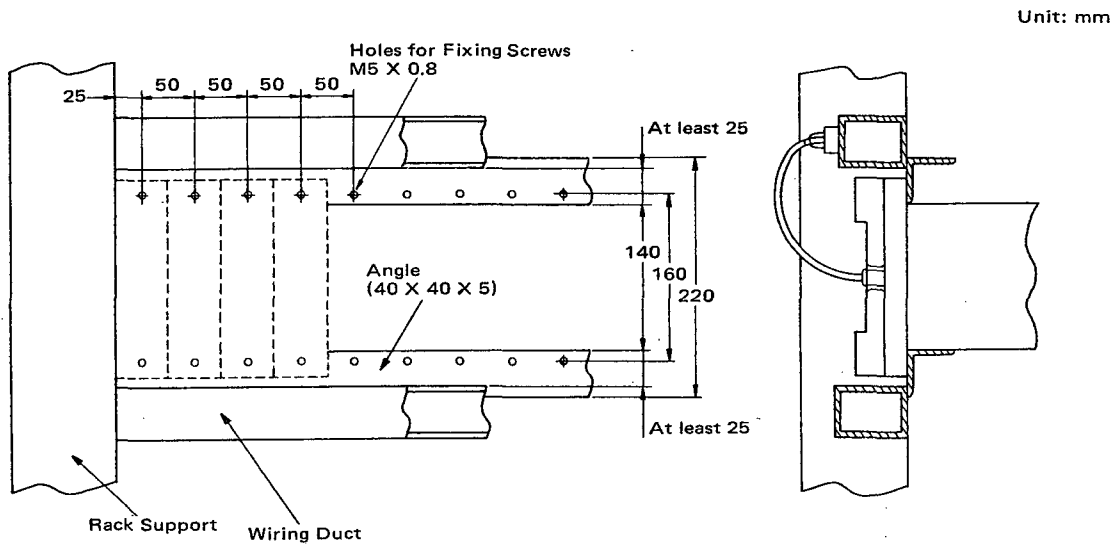
EXTERNAL DIMENSIONS AND TERMINAL LAYOUT.

Terminal Layout

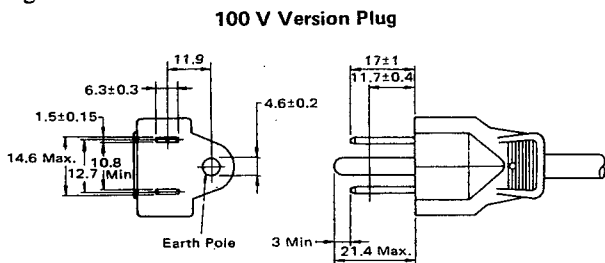


(Dimensions with instrument module installed
Plug dimension: see below drawings)

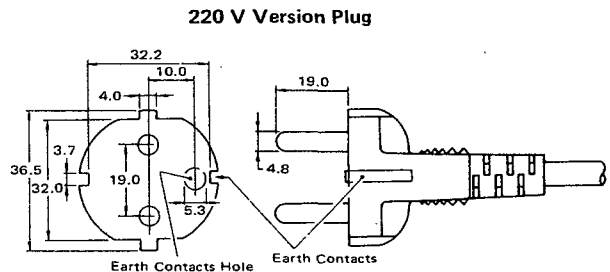
Rack Configuration



Plug Dimensions



JIS C 8303 15A 125 V Two-pin Plug with Earthing Contact



CEE Publication 7 Standard Sheet VII
10/16A 250 V Two-pole Plug with Dual-earthing Contacts

Terminal Wiring for Rack Mount Instruments

STED		SKYD		SALD	
Terminal Designation	Description	Terminal Designation	Description	Terminal Designation	Description
A	+ Output 1 (1 to 5 V DC)	A	NC 1st set point output	A	NC Alarm output
B		B		B	
C		C		C	
D		D			
F	+ Output 3 (4 to 20 mA DC) *1	F	NC 2nd set point output	F	COM
H		H		H	
J		J		J	
K		K		K	
1	+ mV DC input or thermocouple input	1	+ Input 1	1	+ mV DC input or thermocouple input
2		2		2	
3		3		3	
4		4		4	
5	+ RTD input	5	+ Input 2 *2	5	A RTD input
6		6		6	
7		7		7	
8		8		8	

SPLR		SIND		SISD	
Terminal Designation	Description	Terminal Designation	Description	Terminal Designation	Description
A	+ Analog output 1	A	Connected to SICD counter pulse (1)	A	+ Output signal (1 to 5 V DC)
B		B		B	
C		C		C	
D		D		D	
F	+ Contact output	F	Connected to SICD counter pulse (2)	F	+ Output signal (4 to 20 mA DC) *1
H		H		H	
J		J		J	
K		K		K	
1	+ Analog output 2	1	+ Input (1 to 5 V DC)	1	+ Input signal (1 to 5 V DC)
2		2		2	
3		3		3	
4		4		4	
5	+ Fail output	5		5	
6		6		6	
7		7		7	
8		8		8	

SDBT		SDBS	
Terminal Designation	Description	Terminal Designation	Description
A	+ 1st output (1 to 5 V DC)	A	+ Output (transmitter 1)
B		B	
C		C	
D		D	
F	+ 3rd output (4 to 20 mA DC) *4	F	+ Output (transmitter 3)
H		H	
J		J	
K		K	
1	+ 2nd output (1 to 5 V DC)	1	+ Output (transmitter 2)
2		2	
3		3	
4		4	
5	+ Transmitter (input)	5	+ Output (transmitter 4)
6		6	
7		7	
8		8	
7	COM *3	1	+ Transmitter (1 in)
8		2	
		3	
		4	
		5	+ Transmitter 3 (in)
		6	
		7	
		8	
			+ Transmitter 2 (in)
			+ Transmitter 4 (in)

- *1 If these terminal are not used, disconnect them.
- *2 For 2-input version (deviation alarm type only).
- *3 Common for connection of intrinsic safety barrier.
- *4 For Model SDBT-2 only. If these terminal are not used, disconnect them.

===== ORDERING INSTRUCTIONS =====

When ordering, specify the model and suffix codes.